



**Caledonian**

**FIREGUARD Flame Retardant Power & Control Cables**

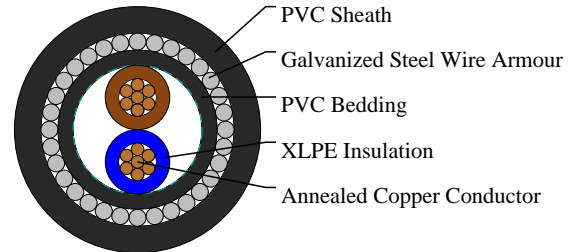
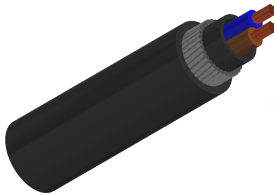
www.caledonian-cables.co.uk

sales@caledonian-cables.co.uk

### **600/1000V XLPE Insulated, PVC Sheathed, Armoured Power Cables to BS 5467 (2-5 Cores)**

FGD400 1RVMV-R (CU/XLPE/PVC/SWA/PVC 600/1000V Class 2)

BS Code: 6942X/6943X/6944X/6945X



### **APPLICATIONS**

The cables are mainly used in power stations, mass transit underground passenger systems, airports, petrochemical plants, hotels, hospitals, and high-rise buildings. This product type is TUV approved.

### **STANDARDS**

Basic design to BS 5467

### **APPROVALS**

TUV Certification (Z1 17 01 98200 003)

### **FIRE PERFORMANCE**

Flame Retardance (Single Vertical Wire Test)	BS EN 60332-1-2
--	-----------------

### **VOLTAGE RATING**

600/1000V

### **CABLE CONSTRUCTION**

Conductor: Annealed copper wire, stranded according to BS EN 60228 class 2.

Insulation: Extruded XLPE GP 8 according to BS 7655-1.3.

Bedding: PVC.

Armouring: Galvanized steel wire

Outer Sheath: PVC Type 9 according to BS 7655-4.2.

Outer Sheath Option: UV resistance, hydrocarbon resistance, oil resistance, anti rodent and anti termite properties can be offered as option. Compliance to fire performance standard (IEC 60332-1, IEC 60332-3, UL 1581, UL 1666 etc) depends on the oxygen index of the PVC compound and the overall cable design. LSPVC can also be provided upon request.

### **COLOUR CODE**

Insulation Colour:

Two-core: Brown, blue



# Caledonian

## FIREGUARD Flame Retardant Power & Control Cables

[www.caledonian-cables.co.uk](http://www.caledonian-cables.co.uk)

[sales@caledonian-cables.co.uk](mailto:sales@caledonian-cables.co.uk)

Three-core: Brown, black, grey

Four-core: Blue, brown, black, grey

Five-core: Green-and-yellow, blue, brown, black, grey

Sheath Colour: Black, other colours can be offered upon request.

### PHYSICAL AND THERMAL PROPERTIES

Maximum temperature range during operation (XLPE): 90°C

Maximum short circuit temperature (5 Seconds): 250°C

Minimum bending radius:

Circular copper conductors: 6 x Overall Diameter

Shaped copper conductors: 8 x Overall Diameter

### Electrical Properties

Conductor Operating Temperature: 90°C

Ambient Temperature: 30°C

### DIMENSION AND PARAMETERS

No. of Cores × Cross-sectional Area	Conductor Class	Nominal Insulation Thickness	Nominal Bedding Thickness	Nominal Sheath Thickness	Nominal Steel Wire Armour Diameter	Approx. Overall Diameter	Approx. Weight
No. x mm <sup>2</sup>		mm	mm	mm	mm	mm	kg/km
2x2.5	2	0.6	0.8	1.4	0.9	13.6	365



Rated voltage



BS 5467



Flame Retardancy  
BS/EN/IEC 60332-1-2